



**Inside
this issue...**

.....

Fantastic News!

Find out the latest... page 8

Suzanne's Story

So this is a hospice... page 11

Upcoming Events

Clear your diary... page 14

Volunteer Vacancies

Get involved... page 19

Welcome...

To the brand new Kilbryde Hospice Newsletter!

We have launched this newsletter as part of our commitment to sharing the work we do, with our supporters and the wider community.

If you haven't heard of us, Kilbryde Hospice is a voluntary independent hospice which exists to provide specialist care to patients with life-limiting progressive illnesses, along with their family and carers. Although based in East Kilbride, we provide support to all areas of South Lanarkshire, and have a variety of services available to the community.

2017 has been a fantastic year for Kilbryde Hospice, and we are excited to share our news from the past few months. In this winter edition, we have an update from our CEO, news from the clinical team, upcoming events, and some lovely patient stories and volunteer interviews.

Thank you to our corporate partner fatBuzz, who kindly sponsored the printing and design of this newsletter.

We hope you enjoy reading our newsletter. Once you have finished reading, please pass this on to a friend, family member or neighbour to help spread the word about Kilbryde Hospice!

Contents

CEO Update	3
Hospice Highlights	4
60 Seconds With...	5
Our Progress	6
News	8
Suzanne's Story	11

Fundraising Fun	12
Thank You	13
Upcoming Events	14
Kilbryde Shops	15
Our Volunteers	16
Volunteer Vacancies	19

Did you know *we offer* a free will writing scheme?

To find out more email: info@kilbrydehospice.org.uk

CEO update...

As we enter into a new year we have already experienced some snow and ground frost. I am however warmed by the continued generosity of our supporters, which helped the hospice to continue to grow throughout 2017. The Donna Mortimer Ballantyne Trust has once again supported us by raising over £100,000 for the hospice at their annual ball, and organising a special appeal to purchase our very own ultrasound scanner which raised an additional £16,000. An audience with Brendan Rodgers in September raised a record breaking £217,000. The Margaret McHugh Miller Cabaret returned to its annual slot in September and we are now looking forward to the Gay Ball in January, directed by Robert and May Miller and Mark Swift, who have already raised £92,000 for Kilbryde hospice. These events have introduced hundreds of new people to the hospice in a really positive way.

These events, along with the many community activities being held across Lanarkshire and Glasgow on our behalf, clearly show people dancing, laughing and enjoying life as best they can. This highlights the misunderstanding that hospices are about dying, when they are most certainly about living the best possible life we can, no matter how long that life may be.

The Lanarkshire Palliative Care review came to an end in August 2017, with recommendations being considered by both North and South Lanarkshire Health and Social Care partnerships. Although a number of themes around palliative care were considered, we are delighted to announce that the Donna

Mortimer Ballantyne In-patient unit is to get 12 specialist in-patient palliative care beds from April this year.

As we progress towards our new in-patient service we must not and cannot lose focus on our current services. 2017 has seen our hospice stretch across the Lanarkshire area and increase the number of people we are supporting. Our Day Services are thriving through our dedicated clinical team, with an ever-increasing rise in patients being referred. Our Care at Home Service continues to increase the number of people it supports in their own homes. With the approval of the in-patient beds this new model will complement the community supports and services which are already in place and which continue to be developed within Lanarkshire to provide integrated care and support of patients in locality settings.

Each week I continue to see the huge generosity of our community, and the dedication of our hospice family of volunteers and staff, which enables us to keep our promise to patients, their families and friends. Your support has never been more important to enable us to increase our services going forward in 2018.

Thank you for caring.

GORDON MCHUGH
Chief Executive



LESLEY WIGGINS

Editor of Kilbryde Hospice Newsletter, and Fundraising & Commercial Manager

GETTING IN TOUCH

We always love hearing from our supporters! Please get in touch if you have any questions, or would like to learn more about ways to support us.

For general enquiries, and information about the services we provide, please email: info@kilbrydehospice.org.uk

For fundraising and events: fundraising@kilbrydehospice.org.uk

Call us on: 01355 202020

Visit: www.kilbrydehospice.org.uk

Write to us at:
Kilbryde Hospice
McGuinness Way
East Kilbride
G75 8GJ

Find us on:

KILBRYDE HOSPICE
is a charity registered in Scotland.
Charity Number SC032424

Hospice *highlights*

What a great year we have had! Here are some of the highlights of 2017 for Kilbryde Hospice:

In Spring 2017 the Big Lottery Fund granted £128,757 to our Care at Home Services! The funds provided are being used to support patients and their carers from their own homes.

The Kilbryde Hospice Salon was officially opened for our patients on the 5th April, by Anne and Taylor Ferguson, our salon sponsors. Local artist Robert Miller, donated some amazing artwork for the walls!

Our day services team organised the Hospice's first EVER day trip for patients! Find out more about their trip to Troon on page 10.

In October we created a series of videos for this year's Hospice Care Week – to take a look, visit our Facebook page! The videos feature staff, volunteers and patients talking about Kilbryde Hospice.

In July, we got our brand new wheelchair accessible minibus, to help us transport patients to and from the hospice. RBS generously donated £32,610 needed to purchase the bus.

Our director, and one of Kilbryde Hospice's founders, Dr John Richards, received an MBE in the Queen's Birthday Honours List 2017, for services to Palliative Care in South Lanarkshire.



For news from our fabulous fundraising team, head to page 12!

60 seconds *with...*

Kilbryde Hospice has had some fantastic new staff members join the team recently. Here they are to introduce themselves – let's give a warm welcome to Andrew, John and Lauren!



ANDREW THOMSON
Cook in Charge

Hi everyone! I'm from East Kilbride, and before I started working at Kilbryde Hospice I was the Head Chef at the White Cart in Busby. I studied cookery at South Lanarkshire College in East Kilbride, and I have been working in kitchens from the age of 16. At Kilbryde Hospice I am the cook in charge of our Kafé and Day Services. This involves the day to day running of the Kilbryde Kafé, making homemade soups and lunches, and providing healthy, homemade meals for our Day Services patients. Our Kafé is open to all – why not come and try it out?

We are open
Mon-Fri, 10-3.30pm.

Interesting fact about me: I recently did a bungee jump to raise for the hospice!



JOHN DOYLE
Corporate Services Manager

Hello! I joined Kilbryde last year after 30+ years in Senior Operational Management in Financial Services Industry. My role at the hospice covers quite a few different disciplines, such as: Finance, Facilities, HR, Projects and Operational Management. I am from East London, where I lived until the age of 17. I spent a number of years with Her Majesty's Armed Forces, travelling to such places as Central America, Africa, The Falklands and Germany.

Interesting fact about me: I was a guest on Jim Davidson's "This is Your Life" and met the likes of Omar Sharif - younger readers might not know who he was, but he starred in Movies such as Lawrence of Arabia, Doctor Zhivago and Funny Girl.



LAUREN MCKECHNIE
Volunteer Development Officer

Hi everyone! I'm from Hamilton, and I joined the hospice recently to lead on the development and coordination of our volunteer programme. Before joining the team, I was a Senior Health Improvement officer with the NHS. I am passionate about being able to positively influence the quality of life for people within my community, which is why I'm currently completing a postgraduate degree in Public Health and Health Promotion. We are always looking for volunteers at the hospice – to find out more, check out page 19!

Interesting fact about me: I am a qualified and practicing yoga teacher, and teach classes in Hamilton in my spare time.

Our progress...

Kilbryde Hospice's clinical services are busier than ever this year! Our services have grown over 2017, and we are excited to share our successes with you.

Our services include

- Care @ Home
- Carers Service
- Day Services
- Drop In
- Music Therapy
- Complementary Therapy
- Chaplaincy
- Counselling and Bereavement

2017 in a nutshell

Care @ Home, Day Services & Out-Patients have received **376 referrals** over the last year.

Day Services care for 36 people on average per week. During 2017, **77.7%** of patients showed a significant improvement in their **physical and emotional wellbeing** after receiving support from the day services team.

"I see the light now after a long spell of darkness" - Quote from day services patient

Our **Care @ Home** team have carried out 714 home visits this year to people across South Lanarkshire. Overall, **78.5%** of people referred to our Care @ Home team, despite having a life-limiting illness and being housebound, have found their **emotional and spiritual wellbeing improved** under Kilbryde Hospice's care.

For more information about our services please visit www.kilbrydehospice.org.uk, or call 01355 202020.

"The support was first class and I will be forever grateful. I would like to thank all the staff for their wonderful support to myself and my wife." - Quote from Care @ Home patient

One of our **complementary therapists** carried out 633 therapies over 2017.

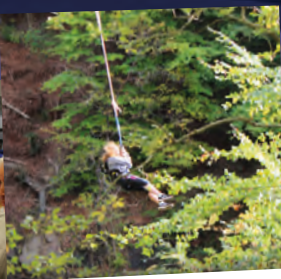
Over the past year we have welcomed 56 people with life-limiting illnesses and carers to our **drop-in services**. We hope this number will rise in the coming year. No need to make an appointment, and we always have staff and volunteers here to answer any questions you have, Mon-Fri, 10am-4pm.

Catherine and Agnes, our small **chaplaincy team**, take time to support patients, carers and staff whenever needed. Here at Kilbryde Hospice, we cater to all religions and no religion.

Over the last year our counselling team have held **825 sessions**, supporting people with life-limiting illnesses, carers and people who have been bereaved.

Carers service, we hold a carers cuppa on Tuesday afternoons, and have held regular courses for carers of people with life-limiting illnesses, over 2017.

Our **music therapist** Anna always ensures that the musical life of the hospice is nurtured every Wednesday. Over the last 9 months she has led 26 music therapy group sessions with our patients. She also organises our **community choir** in the hospice café, on Wednesdays from 1.30-2.30pm.



Without the support of our community, this progress would not have been possible. Please help us to continue our work by donating to Kilbryde Hospice.

No matter how small your donation, you will help us to make a big difference to people across South Lanarkshire.

Visit www.kilbrydehospice.org.uk/fundraising/donate, or text 'KILB20 £5' to 70070 to donate £5.



Fantastic news...

In late December we were thrilled to learn that the Hospice is to receive funding from South Lanarkshire Health & Social Care Partnership for 12 specialist inpatient palliative care beds, an aim we have been working towards for 15 years.

This decision will mean that for residents of South Lanarkshire, those who are at the end of life will be allowed to die at Kilbryde Hospice if that is their choice. We are delighted that our state-of-the-art facility and specialist palliative care services will be able to support people in our

community in their time of need. Our inpatient care service will now add to our Care @ Home, Day Services, Drop-In and Carers Service.

The Kilbryde Hospice specialist team will work together with local community nursing and home care

staff to provide palliative, end of life care and support to people in their own homes or in the Hospice, ensuring that people can access a hospice near to their home.

Gordon McHugh, our CEO, said *“It’s always been the Kilbryde Hospice’s aim to be at the centre of our community supporting the wonderful work already happening around palliative care by the Health and Social Care Partnerships.”*

Welcoming the new Lanarkshire model, Val de Souza, Director of

Health and Social Care, South Lanarkshire Health and Social Care Partnership, said: *“This new model will complement the community supports and services which are already in place and which continue to be developed within Lanarkshire to provide integrated care in support of patients in locality settings”.*

We will be spending the next few months making the final preparations before welcoming our first inpatients, with specialist inpatient care being implemented on a staged basis from April 2018.





Therapy ponies *visit* Kilbryde Hospice!

We were so delighted to welcome the lovely Eduardo and Wilson from Therapy Ponies Scotland to Kilbryde Hospice in May!

The beautiful weather meant that our patients were able to enjoy an afternoon outdoors, walking and petting these lovely boys. Only recently the care team had asked our patients what sort of activities they might like to see at Kilbryde Hospice,

and with a few of our patients mentioning that they had enjoyed horses at some point in their lives, we were delighted that Elaine and John from Therapy Ponies were able to bring the beautiful Shetland ponies along for the afternoon.

We would like to say a HUGE thanks to our friends at BNI Sunrise – North Lanarkshire who sponsored the visit for us.

Our first *ever* day trip for patients!

Staff, volunteers, and local companies worked together to transport 28 of our patients, over two separate days in August, for a relaxing trip to Troon seaside and town. Highlights of the trip included a gentle stroll along the promenade, ice cream in the sunshine, and a fantastic lunch at the South Beach Hotel.

Some of our day services patients shared their thoughts on the day:

"It was so kind of the hospice to organise this – it has made a big difference to me, and I'm sure to others too."

"It's difficult for me to go on day trips like this normally, and I am so happy that

Kilbryde Hospice made this happen. Everyone is smiling today."

Our clinical team worked so hard to make the trip a success, and safe and enjoyable for everyone. Janice Allan, Complementary Therapies Coordinator said:

"It was a really special day, and so rewarding to be able to take our patients outside of the normal day services setting. It was lovely to hear them reliving fond memories of times they had visited Troon in the past, and a privilege to be able to share in their moments. We would like to thank everyone who helped to make the trip so enjoyable, especially our volunteers, South Beach Hotel, and Fairline Coaches!"



Suzanne's story

'So this is the hospice'

Our former Day Services patient Suzanne Crossan wrote a very moving letter about her experience at Kilbryde Hospice:

Not just sad and lonely, more like depressed and suicidal. Abandoned by my best friend, and living alone with a chronic lung disorder, only oxygen therapy and pills were keeping me from death's door. At Christmas time, an 'angel' called Marie set me to rights by saying: "go to Kilbryde Hospice, help is awaiting you there". So I did just that, with a little help from my doctor and an interview with a nurse. Day Services at the hospice and Counselling were suggested.

With trepidation, I awaited the arranged transport on the day. Despite a previous visit, the huge atrium and lift to the upper floor enhanced feelings of anxiety. What lay ahead?

Sitting on a cosy chair with a buzz of nurses, volunteers and patients around me, a nice cup of tea helped the nerves settle and the teas kept coming! How I remember the merry-go-round of activities of that first day. ***"Anxiety was replaced by joy, brought on through companionship and the challenge of new skills or therapies."***

What therapies? From the banging, strumming and rattling of extraordinary instruments in Music Therapy, to the tranquil motions of Chi Gung which I still practise at home to increase my energy levels, to the creative craftwork which resulted in me painting, making a bead bracelet and a thank you card – a focus for intense work on finger/

hand control. I was drawn into the peacefulness of the Quiet Room with the chaplains and given support, and my counselling sessions helped me face up to my fears. The hydrotherapy bath was fabulous. The choir singing and breathing exercises helped strengthen my chest muscles as well as being a source of great enjoyment and laughter.

So what did the hospice do for me? It brought companionship and chatter back into my life. I learned to smile again and took better care of myself. I was emotional and shed tears, and was nursed back to liking myself. I was helped to find peacefulness of mind.

"My confidence exploded and I felt good."

My journey continues on a much firmer footing. I am free from the 'sea of despond' (Pilgrim's Progress). I cannot thank the hospice staff enough. They are brilliant.

"If you are given the opportunity to attend, in whatever capacity, my advice is grab it with both hands."





Fundraising news...

AUTUMN BALL 2017

Our autumn ball took place in Crossbasket Castle on the 28th October, and what an incredible night we had. Clyde 2 Radio's very own Gina McKie joined us to host the event, and the night was filled with fantastic music from local artists. Thanks to the generosity of everyone involved, we raised over **£21,000!**



BRENDAN RODGERS NIGHT

Our Evening with Brendan Rodgers event at Celtic Park raised an incredible **£217,000** in September! Over 460 people attended, and it was a great night all around. Guests included Neil Lennon, and of course Celtic's very own Brendan Rodgers!



Thank you to everyone who joined us on the night, and to our sponsors J.H. Civil Engineering Ltd and MacAdam Asphalt! This is the largest amount we have ever raised in one night, and we are so grateful for the support.



LADIES LUNCH

In May we held our annual Ladies Lunch event at the Crutherland House Hotel, with over 260 lovely ladies attending on the day. The event was a huge success this year, with over **£21,000** raised for Kilbryde Hospice! Thank you to our guests, and to event sponsors The Blue Parrot Company, and Equi's Ice Cream!



GLASGOW KILTWALK 2017

2017 was our very first year at the Kiltwalk, and we were so delighted with the number of sign ups in aid of our charity.

Over 200 people took part, and raised an incredible **£11,000**. Local supporters, and a big team from our corporate partner, City Holdings, took part. Thank you for taking on this challenge everyone!



ANDY CAMERON CLASSIC GOLF DAY

Our annual Golf Day hosted by the fantastic Andy Cameron, raised over **£20,000** again this year. 16 teams took part on the day, and dedicated supporters Bertie Auld and Andy Cameron were officially recognised as Kilbryde Hospice ambassadors! Thank you to all the teams who took part, and event sponsors Prospect Healthcare!



Thank you

Without the generous support from our community, Kilbryde Hospice wouldn't be here today. We would like to say a big Kilbryde Hospice thank you to all of our amazing supporters – here a few of our recent supporters below!

- The Gay Ball organisers May and Robert Miller and Mark Swift have now raised over **£92,000** from their fundraising events!
- The Morrisons Foundation donated **£18,000** to fund the works for a sensory garden.
- Deputy Head of St Leonard's Primary, Louise Bradley shaved her head for Kilbryde Hospice, and her pupils helped to raise over **£3000**
- Local trio Chris, Jason and Gary took on the 96 mile West Highland Way, to raise **£1300** in memory of Patricia Taylor
- Donna Mortimer-Ballantyne Charitable Trust raised over **£100k** for Kilbryde Hospice at their annual Charity Ball
- EKYC Football Club raised **£1000** at their Sportsman's Dinner.
- Local supporters raised **£3616** at their Showjumping for Kilbryde Hospice event
- Vauxhall Arnold Clark cycled 10 miles around Millport to raise over **£2000**
- The West Coast Country Liners raised **£335** at their social event in Liverpool.
- Eddlewood Bowling Club's International Bowls Event raised **£5000!**
- The Strathaven Fundraising Committee raised **£1400** over the festive period and have plans to raise more funds in 2018.
- Kathleen, Sheila, Elizabeth, Caroline and Angie from Arbroath raised over **£1000**
- Our volunteers Maureen and Myra's knitting stall in Hairmyres Hospital has reached the **£40,000** mark for Kilbryde Hospice!
- The Scottish Model Airshow in Strathaven raised **£1000!**

Thank you for your support!

For more Kilbryde Hospice news, visit the Kilbryde Hospice Blog www.kilbrydehospice.org.uk/blog, or follow us on social media!



Upcoming *Events*

Clear your diary...

Here are some of our 2018 fundraising events:

BEETLE DRIVE
Saturday 17th March
Douglas Hall, East Kilbride

EASTER FAYRE & BONNET PARADE
Saturday 24th March
Kilbryde Hospice

80'S DISCO NIGHT
Saturday 21st April
Douglas Hall, East Kilbride

CALLANDER CYCLE CHALLENGE
Saturday 28th April

STIRLING SCOTTISH MARATHON & HALF MARATHON
Sunday 29th April

GLASGOW KILT WALK
(Join the Kilbryde Hospice team for the popular Kiltwalk!)
Sunday 29th April

LADIES LUNCH
Sunday 13th May
Holiday Inn, East Kilbride

GOLF DAY
Friday 18th May
Cathkin Braes Golf Club

EDINBURGH MARATHON
26th/27th May

GREAT WOMEN'S RUN (10k)
Sunday 10th June

EL CAMINO DE SANTIAGO TREK
(International Trek)
9th-16th June

GLASGOW MEN'S 10k
Sunday 17th June

TOUGH MUDDER SCOTLAND
(Take on this muddy challenge & raise funds for our hospice!)
16th/17th June
Drumlanrig Castle, Thornhill

PEDAL FOR SCOTLAND
Sunday 9th September

GREAT SCOTTISH RUN
(Take on this challenge & help raise funds for our hospice!)
29th/30th September

SPORTSMAN'S DINNER
Details coming soon

SUNFLOWER WALK
Details coming soon

CHRISTMAS EVENTS
Details coming soon

AUTUMN BALL
please visit our website for updates on when & where!

QUIZ NIGHT
Held every other month, please visit our website for our 2018 dates!

VINTAGE TEA
Held every month, please visit our website for our 2018 dates!

Kilbryde *shopping*

Do you like a bargain? If so, look no further! Our retail team are always on hand to help, and by purchasing items from our shops, or even donating unwanted items, you are helping us to support people with life-limiting illnesses across South Lanarkshire.



Our *shops*...

MAIN STORE

(Princes Square, EK Shopping Centre)
Stocks high end clothing, accessories, homeware and media at very reasonable prices, including many unique items you won't find on the high street.

Opening hours:

Monday – Saturday, 9am to 5.15pm,
Sunday 11am - 4.45pm

FURNITURE AND HOME STORE

(South Mall, EK Shopping Centre)
Sells furniture including desirable high-quality brands such as Morris, Next, and John Lewis at excellent prices. We offer home delivery, and have a large selection of homeware items, and even sell clearance clothing for just £1.

Opening hours

Monday – Saturday, 11am - 3.45pm.

HAMILTON DISCOUNT STORE

(New Cross Shopping Centre)
Stocks high quality goods at highly discounted prices of £2 and under. We sell clothing, accessories, household goods, media, toys, soft furnishings and some bargain vintage items.

Opening hours

Monday - Saturday 9am - 5.15pm

Exciting *news*...

We will be opening our warehouse (in College Milton South) to the public very soon!

You will be able to browse and choose between a vast range of stock for sale, from furniture, clothing and accessories to toys, books, media, vintage and collectible items and even sports equipment, all before it reaches our stores. This really will be an Aladdin's cave for all those seasoned charity shoppers! *The Official Opening date will be announced shortly, so keep an eye on our website and social media!*

At Kilbryde Hospice retail, we rely on a constant stream of donated goods from you, the public, in order to support the hospice services. To donate small items: visit our shops or warehouse. Larger items can be picked up by our van drivers – call 01355 202020 to arrange.

TO FIND OUT MORE

VISIT: www.kilbrydehospice.org.uk/events OR
EMAIL: fundraising@kilbrydehospice.org.uk



Meet our volunteers



Name: Mike Callaghan

Where are you from? East Kilbride

How long have you been volunteering with us? 18 months

What do you do? I lead walks at the Kilbryde Hospice walking club, which is for people with life-limiting illnesses and carers. I drive the small mini-bus to and from the walks, and assist with the drop-in service at the hospice twice a week.

What made you decide to volunteer with us? I saw a notice in my local chemist that the hospice was looking for walk leaders. I have been leading walks for 28 years with my walking club, and so I applied. I'm so happy I did this – I really enjoy being one of the walk leaders at Kilbryde Hospice.

What words come to mind when thinking of volunteering here?

Helping others

How have you found your experience volunteering with us? I find it gives me great satisfaction mixing with people who have a different outlook on life than me. It helps keep life in perspective, and to appreciate what you have in life.

Kilbryde Hospice walking group meets weekly on a Monday.

If you'd like to join us, please call 01355 202020 for more information.

Name: Jana Lanc

Where are you from? Czech Republic

When did you start volunteering with us? 2.5 years ago. I was an assistant retail manager, and now that I have started studying I have stayed on as a volunteer!

What made you decide to volunteer? I wanted to help make a difference in my community.

What do you do? I volunteer in the retail department of Kilbryde Hospice, in the warehouse and shops. I recently spent two amazing days volunteering in day services with the hospice patients. I am very grateful to have been able to spend the day with such lovely, interesting people. It was great to hear how much of a difference the hospice makes to people. One patient said to me: *"the welcome I get from the team when I enter the room makes me feel like I mean something. The staff are so genuine and such a small gesture can make your day."*

What words come to mind when thinking of volunteering here? Respect and dignity

How have you found your experience volunteering with us? It has been incredibly inspiring and fulfilling. I am so glad I decided to join the team.



Can we stay In Touch

We hope you have enjoyed reading our newsletter!

We'd love to keep in touch to let you know about our work and future fundraising events. No spam, no adverts, and no passing your details on to third parties.

Are you new to Kilbryde Hospice?

Just include your details below, or visit www.kilbrydehospice.org.uk/keeping-in-touch and fill in our online form, if you would like to hear more about our work and future events.

Are you a current supporter of Kilbryde Hospice?

In Spring 2018, data protection regulations are changing in the UK. To comply with the new regulations, we need to check how you would like to be contacted by us in the future. Please include your details below to keep in touch with Kilbryde Hospice, or visit www.kilbrydehospice.org.uk/fundraising/opt-in

Your details:

Name _____

Address _____

Postcode _____

Email _____

Phone _____

Please tick the boxes below to tell us all the ways you would prefer to hear from us:

I would like to receive communications by email Yes No

I would like to receive communications by post Yes No

I would like to receive communications by telephone Yes No

THE SMALL PRINT:

By providing Kilbryde Hospice with your details, you consent to the retention of your data above in accordance with our Privacy Policy. Please visit our website: www.kilbrydehospice.org.uk/privacy-policy for more information. Kilbryde Hospice will not sell or share your details with any third parties.

If at any point you wish to change how we can contact you, please email us at info@kilbrydehospice.org.uk or write to us at Kilbryde Hospice, McGuinness Way, East Kilbride, G75 8GJ

How to stay In Touch



By Post

Please return this completed form to:
Kilbryde Hospice, McGuinness Way, East Kilbride, G75 8GJ



In Person

Please return this completed form directly to our reception located at
Kilbryde Hospice, McGuinness Way, East Kilbride, G75 8GJ



Online

To fill in our online opt-in form please visit
www.kilbrydehospice.org.uk/fundraising/opt-in



Scan Me

Alternatively if you have a smart device you can scan the QR code to be taken directly to our online opt-in form.

Get Involved! Volunteer Vacancies

Upcoming dates for the diary...

January 2018 - *First Aid at Work and Emergency First Aid training.*

Please get in touch with Lauren if you would like to sign up for one of these sessions'



LAUREN MCKECHNIE
Volunteer Development Officer

It has been all go in terms of volunteer development and coordination over the last few months! I have been working on the design and delivery of 'Volunteering with Kilbryde Hospice' sessions for new volunteer applicants. We have had 5 of these have run since the summer. Feedback about this has been very positive, with people feeling they get to have a better idea of the work of the hospice, and where their skills, time, energy and support might be best put to use! We have also welcomed both Alex Wilson and Maureen Duffy to the organisation as volunteers and they are going to be supporting me within the volunteer programme going forward – allowing us to dedicate more time to volunteer training, support and recognition in 2018.

Current Volunteer Vacancies...

We could not run our hospice, shops and warehouse without the support of our existing hard working, friendly volunteers, whom we are very grateful for. Could you join them?

-  **Patient Transport and Patient Transport Assistants** – various days/times available.
-  **Kilbryde Kafe Team Leader** – catering/hospitality/management experience required. Ideally able to dedicate 3-4 hours, twice per week.
-  **Retail and Warehouse volunteers** - various days/times, and a variety of roles available in our shops, warehouse, or van.

For more information about volunteering with Kilbryde Hospice visit www.kilbrydehospice.org.uk/volunteer/ call 01355 202020 or email volunteer.recruitment@kilbrydehospice.org.uk

COMING SOON!
*with the launch of our
exciting new website...*



kilbryde
hospice
LOTTERY

www.kilbrydehospice.org.uk

Write to us at: Kilbryde Hospice
McGuinness Way East Kilbride G75 8GJ

Find us on:



KILBRYDE HOSPICE is a charity registered in Scotland. Charity Number SC032424