

Christmas  
Special

# NEWSLETTER

Kilbryde Hospice Volunteer View

Christmas 2025



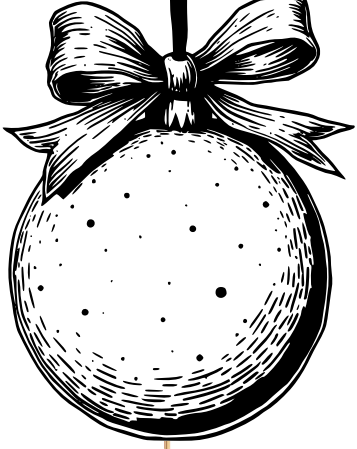
IN this fabulous festive feature-filled special edition of your newsletter we focus on this wonderful time of the year, looking back at memorable events as well as some highlights from the year just about to end. There are also some special thank you messages as well as a not-too-serious quiz and a unique 'My Journey' story!

## Meet Kilbryde Hospice's own Santa Claus





# CHRISTMAS MESSAGES TO OUR VOLUNTEERS



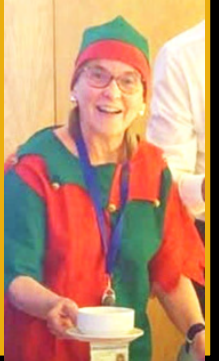
Thank you for the kindness, time, and compassion you bring to Kilbryde Hospice. Your support makes a real difference every day. Wishing you and your loved ones a peaceful, joyful Christmas, and my heartfelt appreciation for all you do throughout the year.

*Gordon McHugh, Chief Executive*



As we approach the Christmas season and the end of the year, I would like to thank every volunteer across the organisation for everything you have done to help me personally and for all our patients and families. Wishing you all a very happy Christmas and to quote my Uncle Frankie "Aura Best for 2026"

*Margaret Mary Cowan, Clinical Services Director*



Wishing you and your families a fantastic break over the Festive period! Thank you all for your help over the past year...it's truly appreciated! Here's to a great year ahead too

*Melanie Sharp, Human Resources Officer*



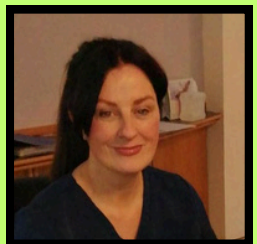
Sending festive cheer to our wonderful volunteers! You've made such a huge difference this year with your kindness and energy. Thank you for everything you've given. Hope this season brings you joy, and lots of well-deserved fun!

*Louise McGown, Corporate Services Manager*



During this season of giving, we're especially grateful for what our volunteers offer our staff, patients and families in IPU. Thank you for your kindness, dedication, and the joy and support you bring to our In Patient Unit. Your hard work and compassion make our unit brighter for everyone. Thank you for being such an incredible group of volunteers and the IPU Team wish you all a very Merry Christmas!

*Ann-Majella McFadden, IPU Manager*



A very Happy Christmas to all our lovely volunteers. The effort and hard work you put into Fundraising and the Hospice all year is phenomenal. From all the fundraising team to all volunteers across the organisation. Happy Christmas - we couldn't do it without you.

*Lesley Wiggins, Fundraising & Commercial Manager*





# Teddy: our party animal



**"A very Merry Christmas to all my fans, especially those who took me on holiday in 2025"**

**Contact Volunteer Support if you can take Teddy with you on your trip, near or far, and take some pic.**



**Teddy tried to steal the show at our Volunteers' Christmas Event, even trying to peek into the raffle prizes. He was also with Sandra Davidson on a weekend away in Ayrshire, dressing for the occasion, as well as enjoying himself at the silent disco.**





# VOLUNTEER THANK-YOU EVENT

MORE  
SUPER  
PHOTOS  
ON P10



**FULL HOUSE :** Every single table and seat was occupied for the occasion



**CAKE TIME:** Willie MacLean serving the people as always



**JONATHAN McDADE :** Our guest singer was on top form



**FRANK MILLAR :** Brought the house down



**PRIZE GUYS:** Fiona (left) and Craig (middle) were raffle winners, also Briege (right) who checked out her prize



**COMPETITION TIME:** A great shot (above ) impressed Fiona, but a steward's enquiry was needed (right)



**MOVE IT:** Strictly Kilbryde Dancing



# MY JOURNEY

We have a special guest in the  
spotlight for this Festive Edition



## RUDOLF THE RED NOSED REINDEER

I was born with an unusual feature, a red nose, which made me stand out from all the other reindeers in our commune beside The North Pole.

It was so cold that you would have thought you were in East Kilbride, but unfortunately the cold made my nose even brighter.

When I got sent out to play, the other reindeers (nasty lot) wouldn't let me play...I think they were just jealous!

They would call me names as well, so I ended up wandering around myself until one day I got lost in heavy fog.

Just at that, a huge guy with a massive beard, appeared through the mist as he had been attracted by the red light of my nose.

Called Santa Claus, he said: "Want a job?". I asked him what the pay was but he said you get all the carrots you could dream of eating.

So I joined his team and I now lead the way on Christmas Eve but there is one small problem.

The reindeers following me (some of who used to tease me) are forever saying "Rudolph you have to stop eating those carrots, we are right in the firing line of the side effects!"

Well, what goes around comes around and I have a quiet smile to myself and the morale of the story ? - Why are carrots so special ? Because there is a superior air surrounding them!

**Q - What do you call Santa's most impolite reindeer? A - Rude-olph**

**Q - What street in France do reindeer live on? A - Rue Dolph**

**Q - Did Rudolph go to school? A - No he was 'elf' taught**

**Q - What is Rudolph's favourite day of the year? A - Red Nose Day**

**Q - Who laughed and called Rudolph names? A - Olive, the other reindeer**

**Q - What reindeer game do reindeer play at parties? A - Truth or deer**

**Q - What happened when Dasher and Rudolph had a race?**

**A - Rudolph won by a nose!**



# FESTIVE QUIZ WITH A TWIST

## ANSWER A,B, or C

**1 - Where is Santa from ?**

A - The North Pole

B - Holland

C - Partick

**2 - What did my true love give to me on the 1st day of Christmas ?**

A - Partridge in a pear tree

B - A turtle dove

C - A bottle of Buckfast

**3 - Which 'good king' looked out on the feast of Stephen?**

A - Wenceslas

B - Old King Cole

C - King Steve of Hampden Park

**4 - What traditionally goes on top of the Christmas tree?**

A - A fairy

B - A star

C - The family pet mongrel

**5 - What do children hang up by the fireplace?**

A - A stocking

B - A carrier bag

C - Their mum's bra

**6 - In the song what is 'oh what fun it is to ride'?**

A - A one-horse open sleigh

B - A real reindeer

C - The 201 bus to Hamilton

**7 - What is the traditional Christmas meal ingredient ?**

A - Turkey with trimmings

B - Roast beef and potatoes

C - Kebab and a can of Irn Bru

**8 - On Christmas Morning, what do folk realise they forgot to buy?**

A - Batteries for the kids' toys

B - Medication for over-indulging

C - Earplugs

**9 - What did Santa shout when he got stuck up the chimney?**

A - 'Girls and boys will get no toys'

B - 'The reindeer's stuck as well'

C - 'So much for the Atkins Diet'

**5 - What TV Christmas Specials can we expect?**

A - Soap Opera cliffhangers

B - 'It's a Wonderful Life' movie

C - 'Halloween' movie



# LOOKING BACK 2025

Some Newsletter highlights of the year



Teddy at Strictly in Glasgow



Our mascot in a unique race



Complementary product launch



We welcomed Louise , our new Corporate Services Manager



A Kilbryde Hospice t-shirt appeared at Disneyland Paris (above right)



The first Kilbryde Hospice Roadshows were held throughout South Lanarkshire

Kilbryde Kafe was renamed Joe's Bistro in honour of Joe Lowe, a stalwart supporter of the hospice (right)





# LOOKING BACK 2025

We asked five hospice staff members and volunteers for their personal highlight of 2025



I will never forget the evening my family arrived home from Australia. They'd only been away on holiday for eight weeks, but I'd really missed my granddaughters and our reunion was so very sweet and special. Not everyone has loved ones living nearby and this time of year can be particularly lonely. Let's make Christmas special for others this year.

*Hospice volunteer chaplain Willie*

This year was the proudest year of my life. My son, Ryan, and I have spent most of our lives together. I'm the proudest single mum of the most wonderful son I could ever have wished for and this year he got married. I'm not really a public speaker but I gave a speech. He knows how proud I am of him and how much I love him, but I wanted him and everyone else hear me say it.



*Donna, IPU*



I retired after 40 years in nursing, mostly working in Haematology and General Oncology. I worked in various places, including the old Southern General and latterly at a Beatson Satellite Chemotherapy Unit at the former Victoria Hospital in Glasgow.

*Volunteer Gail*

I was one of the group that travelled to the Royal Garden Party at Holyrood which was a highlight in itself but I was also fortunate to have a conversation with Princess Anne, when she stopped to speak to myself and colleague, volunteer Pamela. Princess Anne asked where we worked, how long we had been here, our job roles and how many hours Pamela volunteered for.



*Linda, Housekeeping Assistant*



My son is a coach with EKFC 09 Blues. The Blues were considered inferior to the other 09s team, The Golds. My grandson (2<sup>nd</sup> right) was also playing with the team in season 24/25 when they defied the odds to win their league. The champions are pictured here with myself, as I am the media person for The Blues, whose victory was a proud moment for dad/grandad/matchday reporter/ features writer.

*Frank, Volunteer Support and Hospice Newsletter reporter*



# FESTIVE FAMILY QUIZ



1) Three of Santa's reindeers' names begin with the letter 'D'. What are those names?

2) The movie, Miracle of 34<sup>th</sup> Street, is based on a real-life department store. What is it ?

3) Elvis isn't going to have a white Christmas! According to the song, he's going to have a... ??

4) According to the song, what did my true love give to me on the eighth day of Christmas?

5) In what decade did Coca-Cola start using Santa Claus in advertisements?

6) In what country did the custom of putting up a Christmas tree originate?

7) In which country is the most popular Christmas Day Meal Kentucky Fried Chicken (KFC)?

8) In what year did Mariah Carey 'All I want For Christmas' song come out ?

9) What was the original colour of Santa's suit ?

10) Which Christmas song was the first to be broadcast from Outer Space ?

**A big thank you to volunteer Peter Sweeney who compiled this quiz. Have family festive fun by answering the questions and we will reveal the answers in our first edition of 2026. Have a Happy Christmas folks!**

## SO HERE IT IS, MERRY CHRISTMAS

KILBRYDE Hospice Music Therapist, Anna Ludwig, spoke about the importance of music at this time of year.

She said: "At Christmas there's music everywhere and for some people that will be a delight to enjoy while, for others, it will drive them out of a shop because they find it quite irritating.

"But that is the thing about music - it affects us all very differently but it does affect everybody as everyone is born with the innate ability to appreciate, be rhythmic, and enjoy music.



"Music is everywhere; we have the brass bands playing Christmas Carols in the street, which stops people in their tracks as there is something in that sound which taps into people at the festive season.

"We probably ignore a brass band at any other time of the year but, just now, it is associated with Christmas and people stop and listen.

"Folk also love hearing little kids sing Away in a Manger as there is something special about that. It should be raw but shouldn't be perfect."



# CHRISTMAS PICTURE SPECIAL





# **2025: A Year of Quiet Strength and Community at Kilbryde**

**Thanks to the dedication of our volunteers, 2025 has been a year where Kilbryde Hospice has continued to grow, adapt and stay rooted in our community.**

**Some highlights you helped make possible:**

- Welcoming new Trustees to our Board, strengthening leadership and helping shape Kilbryde's future.**
- Continuing to provide safe, compassionate care throughout a challenging interim period – with volunteers remaining a constant source of warmth and reassurance.**
- Growing our Compassionate Communities work, supporting people beyond our inpatient unit through community-based, non-medical support.**
- Listening to our community through our AGM and Roadshows, helping shape the foundations of Kilbryde's 2026–2030 Strategy, future communications and a values-led rebrand.**
- Opening Rutherglen's Hospice Shop and progressing our East Kilbride store – keeping Kilbryde visible and connected locally.**
- Joe's Bistro, renamed in memory of Joe Low, now stands as a welcoming space at the heart of the hospice – a place of connection, conversation and remembrance.**

**Every one of these achievements has been strengthened by your time, kindness and commitment. Thank you for helping Kilbryde remain a place of care, compassion and community.**

**Gordon McHugh  
Chief Executive  
Kilbryde Hospice**